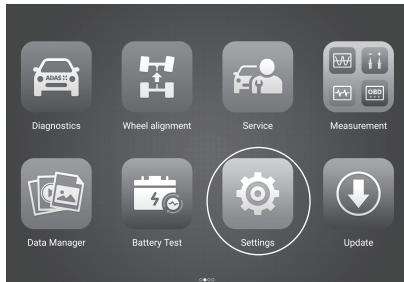


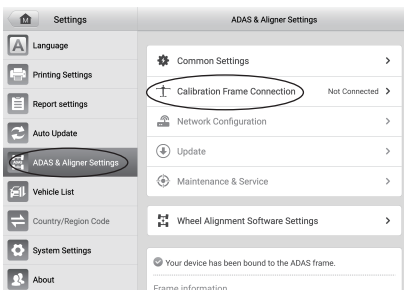
### Connect the Calibration Frame via Wi-Fi

1



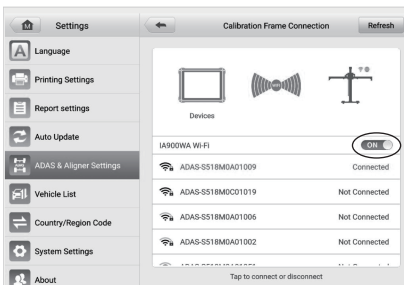
Turn on the MaxiSys tablet. Tap the **Settings** application on the MaxiSys Job Menu.

2



Tap the **ADAS & Aligner Settings** option on the left column. Select the **Calibration Frame Connection** option to display the Calibration Frame Connection screen.

3



Swipe the Wi-Fi toggle switch to enable calibration frame Wi-Fi. The tablet will search for available units. The Wi-Fi name of the calibration frame will be "ADAS," suffixed with a serial number. Tap the appropriate unit to connect. When a connection is established, the connection status reads "Connected."

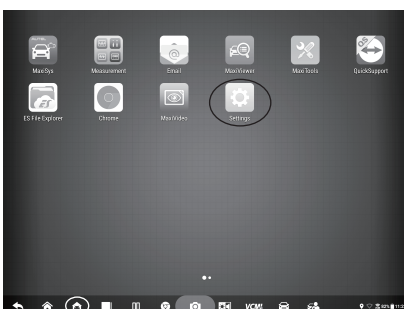
**After the frame is connected by Wi-Fi, the tablet screen will be projected on the monitor.**

**NOTE:** It may take up to 30 seconds to connect the tablet to a calibration frame. Please wait patiently.

The calibration frame Wi-Fi may be inaccessible due to local restrictions. If you cannot connect to the calibration frame Wi-Fi through the above process, you may need to check and change the country or region on both the monitor and the tablet, and then follow the STEPS 1–3 above again.

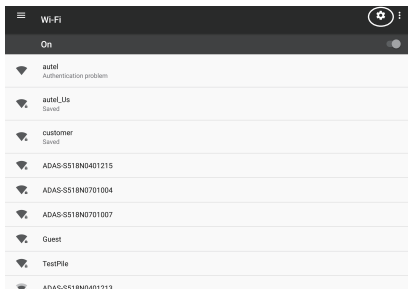
### Set Country/Region

1



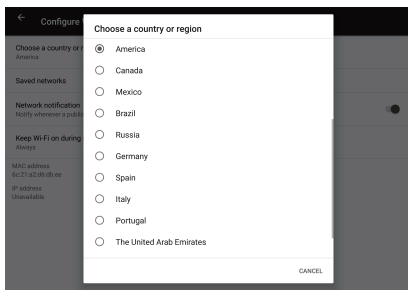
Tap the **Settings** application from the Android home screen on the MaxiSys tablet.

2



Select **Wi-Fi** to display the Wi-Fi Settings screen. Tap **Settings** (the gear icon) on the upper-right corner of the screen.

3

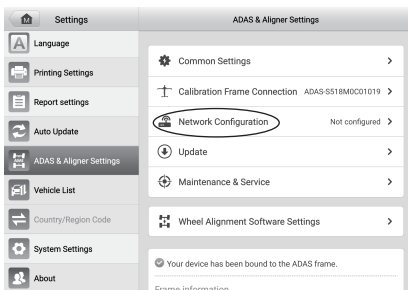


Choose your local country/region from the pop-up window.

4. Repeat the same process on the monitor.

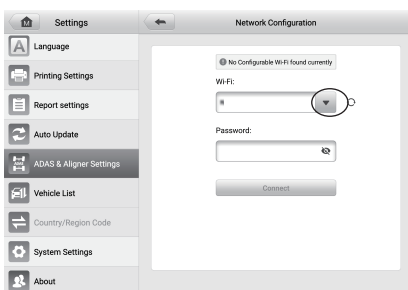
## Connect the MaxiSys Tablet to Your Wi-Fi Network

1



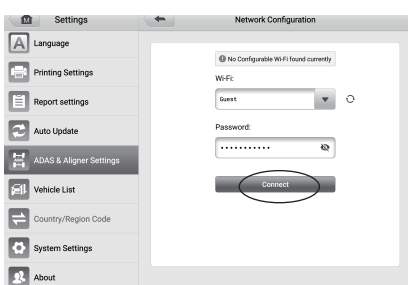
Tap **Settings > ADAS & Aligner Settings**, then select **Network Configuration** to enter the Network Configuration screen.

2



Tap the dropdown list. Select your Wi-Fi network and enter your password when prompted.

3



Tap the **Connect** button to connect to the selected Wi-Fi network. Once connected successfully, a confirmation message will appear.

**NOTE:** The illustrations in this Quick Reference Guide are for reference only. The actual screens may differ.